



"Different Ideas, **Strong Together**"

**KURTUBA**

A large white rectangular area with horizontal dashed lines, intended for writing or drawing.

# KURTUBA

► "Different Ideas, **Strong Together**"

Kurtuba Automotive Machine Ind. and Trade Ltd. Co.

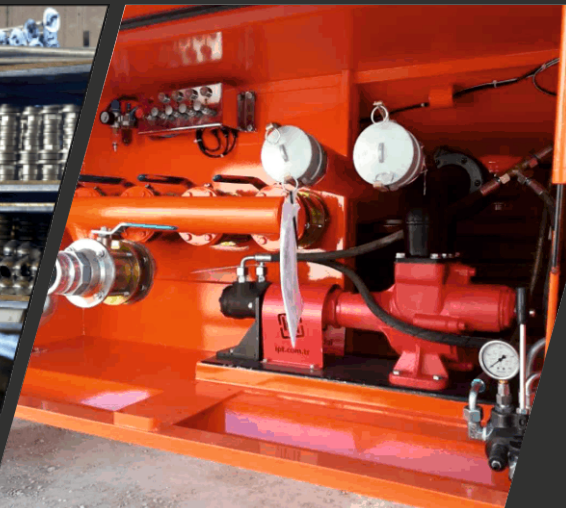
## ABOUT US

AS KURTUBA we have setted out for to produce fuel tanker equipments. We purpose to manufacture products produced according just in time production system, by composing high technology with our experience, by increasing our market share and supply good quality equipments to our customers.

Whether by our quality or technology also with our search and development studies we make our best effort to provide to our customers the best solutions.



 [kurtubamak.com](http://kurtubamak.com)



## COVER'S

### Menhole Cover - With Clip (CSTK 500)

It mounted to top of the tank with welded bottom throat steel. Top plate attached to top throat steel with leakproof joint and pipe clip. It is manufactured with ST37 quality material and covered by galvanize plate. Middle manual openable cover is (steel 171) aluminium foundry. It will be designed by aluminium or CrNi steel for clients request.



### Menhole Cover - Classic Type (KTTK)

It is designed for classic type Tankers which is designed for gravity discharge. Aluminium Aerator fitted to cover. Cover has sealing which is suitable for petroleum products.



### Menhole Cover - For Powder Material (SMK)

Welding Rings is 5 mm ST 37 quality steel and according your request it is possible to produce from aluminium material. Seals are suitable for cement or equivalent. Diameter of the cover is 500 mm and pressure test applied on 3 bar



## COVER'S



#### Menhol Cover - Aluminium Cast (ADMK)

It mounted to top of the tank with welded bottom throat steel. Top plate attached to top throat steel with leakness joint and pipe clip. It is completely cast aluminium. Middle manual openable cover is (eteal 171) aluminium foundry. Vapour Recovery Valve, Overfill Optical Sensor and dipstick tube holes are fitted on cover.



#### Menhole Cover - With Original Aerator (CSTK 400)

It mounted to top of the tank with welded bottom throat steel. Top plate attached to top throat steel with leakness joint and pipe clip. It is manufactured with ST37 quality material and covered by galvanize plate. Middle manual openable cover is (eteal 171) aluminium foundry. It will be designed by aluminium or CrNi steel for request of client.



#### Menhole Cover - With nuts (CSTK 500)

It mounted to top of the tank with welded bottom throat steel. Top plate attached to top throat steel with leakness joint and pipe clip. It is manufactured with ST37 quality material and covered by galvanize plate. Middle manual openable cover is (eteal 171) aluminium foundry. It will be designed by aluminium or CrNi steel for clients request.

### **Aluminium Valve with Cap (AKV)**

Aluminium Valve with aluminium cap used to as unloading valve of tank. System completely manufactured (eteal 171) aluminium leakness joint and (inox) chrom nickel attachment component and subjected to pressure and leaknesstest.



### **Aluminium Valve - Flanged Type (AFV)**

Aluminium Valve with flange used to as connecting valve of tank. System completely manufactured (eteal 171) aluminium leakness joint and (inox) chrom nickel attachment component and subjected to pressure and leaknesstest.



### **Aluminium Valve - Square Flange (AKFV)**

Aluminium Valve with square flange cap used to as connecting valve of tank. System completely manufactured (eteal 171) aluminium leakness joint and (inox) chrom nickel attachment component and subjected to pressure and leaknesstest.



### **HEAD VALVE WITH ALUMINIUM CAMLOCK (AVBK)**

Head valve with aluminium camlock used as unloading valve of tank. Product is manufactured by (eteal 171) aluminium and heatproof teflon and subjected to pressure and leakness test.



## VALVE'S

**Steel Global Flange Valve (CVF)**

Global valve with flange is manufactured by ST37 quality steel and galvanized for protecting rusting. It's globe plastered by ST37 quality material and wash over by chrome. Used teflon on leakness component. Which is resistance to fuel products and fire. Our production include 2", 2.5", 3" and 4".

**Steel Global Head Valve (CVB)**

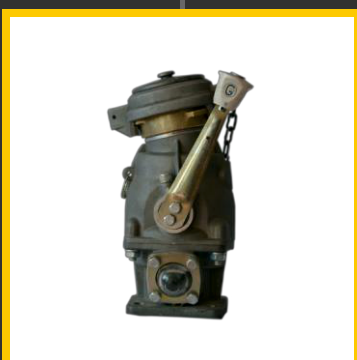
Global Head Valve is manufactured by ST37 quality steel and galvanized for protecting rusting. It's globe plastered by ST37 quality material and wash over by chrome. Used teflon on leakness component which is resistance to fuel products and fire. Our production include 2", 2.5", 3" and 4".

**Steel Global Geared Valve (CVB)**

Global Geared Valve is manufactured by ST37 quality steel and galvanized for protecting rusting. It's globe plastered by ST37 quality material and wash over by chrome. Used teflon on leakness component which is resistance to fuel products and fire. Our production include 2", 2.5", 3" and 4".

**4" Butterfly Valve (KV)**

It makes useful loading and discharge by making serial connection between valve and hoses when tanker makes loading and discharge. All of the camlocks are according to all standard using and all of them manufacturing by aluminium foundry.

**Aluminium Delivery Valve with Glass (ACVB)**

Aluminium Delivery Valve with glass used to as delivery valve of tank. System completely manufactured (etal 171) aluminium leakless joint and (inox) chrom nickel attachment component and subjected to pressure and leakless test.

## AERATOR

### **Aerator (ADN)**

Product is fitted on manual aluminium foundry cover which placed on manhole cover. It evacuate pressure inside of tank as operating itself. System completely manufactured (eteal 171) aluminium leaknssjointand (inox) chrome nickel attachment component and subjected to pressure and leaknss test



### **Mushroom Aerator (MNE)**

Fitted to tank manhole cover. It provide to throw out pressure for protect expansion of tank when the tank is moving. It is completely manufactured by (eteal 171) aluminium and subjected to leaknss test.



### **Mushroom Aerator (MNB)**

Fitted to tank manhole cover. It provide to throw out pressure for protect expansion of tank when the tank is moving. It is completely manufactured by (eteal 171) aluminium and subjected to leaknss test.





# KURTUBA

## VALVE'S



### **4" PNEUMATIC BOTTOM SAFETY VALVE (APEV-4)**

Fitted bottom of the tank per each compartment. It operate loading and unloading recieved messages from control panel. It do emergency valve duty probablity accident. System completely manufactured (eteal 171) aluminium leakness joint and (inox) chrom nickel attachment component and subjected to pressure and leaknesstest



### **3" PNEUMATIC BOTTOM SAFETY VALVE**

Fitted bottom of the tank per each compartment. It operate loading and unloading recieved messages from control panel. It do emergency valve duty probablity accident. System completely manufactured (eteal 171) aliminium leakness joint and (inox) chrom nickel attachment component and subjected to pressure and leaknesstest.



### **4 " PNEUMATIC EMERGENCY VALVE -TALL (UDV-4)**

Fitted bottom of the tank first compartment for easy maneur of Truck. It operate loading and unloading recieved messages from control panel. It do emergency valve duty probablity accident. System completely manufactured (eteal 171) aluminium leakness joint and (inox) chrom nickel attachment component and subjected to pressure and leakness test.



### **BOTTOM VALVE MECHANICAL (MTV)**

Fitted bottom of the tank per each compartment. It operate loading of tank with manuelly via rope from tank cabinet.

## VAPOUR RECOVERY VALVE

### **PNEUMATIC CONVENTIONAL VAPOUR VALVE (BTGD)**

It is fitted to outpup of Vapour Recovery Valve contact system on tank. Vapour Recovery Valve operating system is opposite operating system. System completely manufactured (eteal 171) aluminium leakness joint and (inox) chrom nickel attachment component and subjected to pressure and leakness test.



### **VAPOUR RECOVERY VALVE (BGD)**

Vapour recovery Valve fitted on manhole cover. It run (open or closed) for signal from control panel during loading and gischarge. System completely manufactured (eteal 171) aluminium leakness joint and (inox) chrom nickel attachment component and subjected to pressure and leakness test.



### **VAPOUR RECOVERY ADAPTOR (PDIBA)**

It is mounted in valve box to vapour system that collect and carry vapour from Vapour Recovery Valve which is placed on manhole cover. Vapour recovery Adaptor make vapour recovery system as mounting hose that came from loading station during loading. System completely manufactured (eteal 171) aluminium leakness joint and (inox) chrom nickel attachment component and subjected to pressure and leakness test.



### **VAPOUR RECOVERY ADAPTOR DUST CAP (PDIBATK)**

It is designed for pneumatic vapour recovery adaptor for protection. It is used with Vapour Recovery Adaptor



# BOTTOM LOADING ADAPTOR



## 4 " BOTTOM LOADING ADAPTOR (ADV)

Fitted to valve box per each compartment. It is used for loading and unloading of tank during bottom loading. System completely manufactured (etal 171) aluminium leakless joint and (inox) chromium nickel attachment component and subjected to pressure and leak test.



## 4x3 GRAVITY COUPLER (ADVBA)

Its 4" side fitted to bottom loading adaptor and other 3" side fitted to discharge hose and then loading process occur.



## DUST CAP (ADVTK)

It is for protecting bottom loading adaptor after loading or unloading.

## SENSOR & SOCKET

### OVERFILL JOP SENSOR (ASS)

Optic Overfill Top Sensor fitted on manhole cover. It receive signal to socket when tank get full during loading. Socket stop loading. System operate 12 Volt electric and designed as exproof. (Our production does not include these product but we import)



### OPTICAL SOCKET (PSK)

It receive loaded message from optic sensor on dome of tank to socket which is connected with loaded station. System operated 12 Volt electric and designed as exproof. (Our production does not include these product but we import).



## CONTROL PANEL

### CONTROL PANEL (KNTU)

Fitted to tank valve box. Air system attached to control panel which is attached from trailer air tank. It operate tanks loading and discharge. And included on control panel air button per each compartment and air pressure meter.



## OTHER PRODUCT



### HOSE REEL (HSM)

It is used on tanker which has pump or meter system. It used for reeling long hoses correctly that is used for loading and unloading. We have two type of production 1,5" and 2" Produced for desirable type. Manufactured from ST37 steel and profile- Bas and Gear components are aluminium



### SUMP FLANGE FOR BOTTOM VALVE

It is welded to bottom of the tank for mounting pneumatic bottom loading valve.



### CEMENT TRAILER SAFETY VALVE (SEV)

The product is manufactured with aluminium (etal 171) and used for releasing redundant air in cement trailer during unloading. The system can be manually fixed to any based degree.



### MEASURE PIM (AOC)

Measure pim fitted on manhole cover. Out of Pirns accredited to capacity of product. It is used for indicate capacity of product. System completely manufactured (etal 171) aluminium leaknness joint and (inox) chrom nickel attachment component and subjected to pressure and leaknness test.



### ALUMINIUM FILTER (AFLT)

It is used on tanker which has pump or meter system. It is protect pump or meter from foreign body which comes from tank as filtering them. System completely manufactured (etal 171) aluminium leaknness joint and (inox) chrom nickel attachment component and subjected to pressure and leaknness test.

## OTHER PRODUCTS

### PRODUCT INDICATOR (YTG)

Product indicator fitted per each compartment. Product indicator operate manually as changing to loaded product type which compartment loaded.



### EARTHING PULLEY (TMK)

Designed for earthing of Bottom Loading Tank Trailer during loading and unloading.



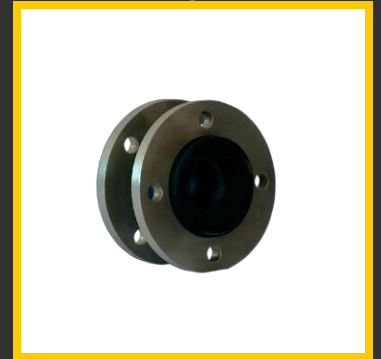
### Discharge Hose Protection Bonner (BHMK)

Discharge hose protection bonner provide to not leak liquid which is collected inside of hose carrier that placed both side of tank. Users must discharge liquid occasionally.



### KONPANSATOR (KMPN)

It is for connecting pipe of the Tank Trailer. It reduce vibration during Trailer on road.

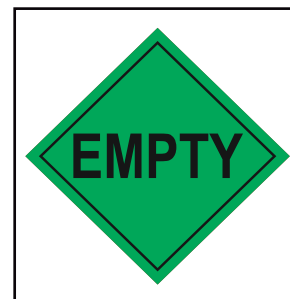
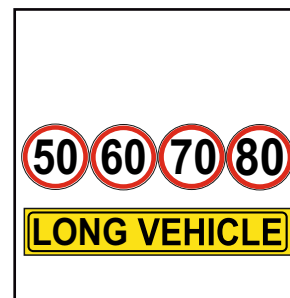
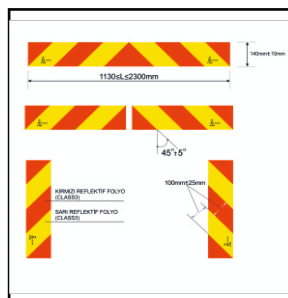
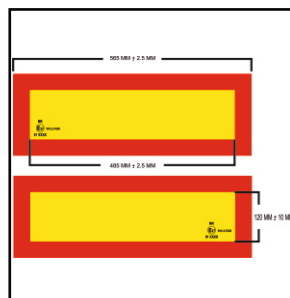


### CONNECTING FLANGES

Connecting flanges for Valves. Steel and aluminium flages are available.



## OTHER PRODUCTS



# KURTUBA



## KURTUBA

Horozluhan Mah. Cevdet Sk.  
No.2H/1 Selçuklu / KONYA

Tel: +90 332 248 80 42

info@kurtubamak.com  
taha@kurtubamak.com

 kurtubamak.com